

SUMMER 2019

PIPELINE

GWIN, DOBSON & FOREMAN – ENGINEERS



Johnsonburg Area And Domtar Paper Mill



Harpers Ferry Historic District

GD&F WATER PROJECTS ADVANCING TO CONSTRUCTION

After Years Of Planning And Design, Water System Improvement Projects Totaling Almost \$100 Million Will Soon Be Underway In PA, WV

Johnsonburg Water System Improvements

Located in Elk County, PA, the Johnsonburg Municipal Authority serves over 1,400 customers in Johnsonburg Borough and Ridgway and Jones Townships. The borough is home to the Domtar paper mill which employs over 430 workers. Some elements of the water supply and distribution system are over 100 years old including the filtration plant on Powers Run. To comply with a PADEP consent order, a new water supply on the East Branch of the Clarion River is planned along with a 1.0 MGD membrane filtration treatment plant, new water storage tanks and 7,500 LF of new 6-12 inch water mains. The \$14.6 million project is funded by a grant/loan from the USDA Rural Utility Service with construction scheduled for this fall.

Harpers Ferry Water System Improvements

Harpers Ferry is in the Eastern Panhandle of West Virginia and home to the Harpers Ferry National Historic Park of Civil War-era fame. Its community water system is inadequate for the increased demands of the service area. The proposed \$7.0 million project includes the upgrades and additions to the 0.5 MGD water treatment plant (including microfiltration), new Elk Run intake and raw water pumping station; 20,000 LF of new 4 to 12-inch waterlines; water tanks rehabilitation; and system-wide water meter replacement program. A project loan has been secured from the USDA Rural Utility Service and final approval of water rates by the WV Public Service Commission is pending. Construction on the project should start later this year.

continued next page

Moorefield Water System Improvements

Moorefield is located 50 miles south of Cumberland, MD in Hardy County, WV. The town is home to a Pilgrim's Pride poultry processing facility, the largest employer in the area. To ensure a reliable water supply to the plant and community, the town will invest over \$28 million in new water infrastructure. The USDA Rural Utility Service is providing funding. The project involves the construction of an 8.0 MGD membrane filtration water treatment plant; 1.5 MG D-110 concrete storage tank on Paskell Hill; new intake on the South Branch of the Potomac River; and 10,000 LF of 12-inch water main. Construction is scheduled to begin later this summer.

Bellwood Water Supply Dam and Treatment Plant Upgrades And Additions

The Altoona Water Authority (PA) is planning to invest \$23 million for major improvements to the Bellwood water supply and treatment system. To address dam safety concerns, a new labyrinth-weir spillway, intake tower, crest parapet wall and seepage collection system is planned for the 1940's-era dam. The Bellwood water treatment plant will be upgraded with membrane filtration technology to optimize treatment performance and provide greater reliability under all seasonal conditions. Upgrades will include a new ozone generation system, chemical feed equipment and instrumentation. The project is entering the final stages of the permitting and project funding process with construction planned for 2020.

Nixon-Kocher Water Treatment Facility

The State College Borough Water Authority (PA) is planning to construct a state-of-the-art water treatment plant for its Nixon and Kocher well fields. The \$25 million project includes an ultra-filtration process (sub-micron particle removal), granulated activated carbon system (emerging contaminants) and ultraviolet disinfection (pathogen inactivation). The architectural design of the plant is sensitive to the agricultural setting of the project area. The 3.0 MGD plant (expandable to 5.0 MGD) will provide redundant filtration capacity and meet the ever-expanding needs of the service area. Construction may begin this fall, pending a funding offer from the Pennsylvania Infrastructure Investment Authority.



3D Rendering – Nixon-Kocher Water Treatment Facility

**GD&F Q&A WITH:
JESSICA SPROUSE, MARKETING DIRECTOR**

Q. As the Marketing Director, what exactly is your role?

A. My primary job responsibility is to seek new business and raise our corporate profile, especially within professional associations and organizations, but also in our local community.

Q. How do you go about seeking new business?

A. By being constantly on the lookout for opportunities; it is an ongoing effort. The most obvious way is by showcasing and promoting our capabilities at trade shows and events where potential clients might be in attendance. But, I also comb through newspapers and I do online searches for any potential GD&F clients and projects. I make site visits and talk to existing clients and new contacts about our capabilities.

Q. As you are talking to other industry professionals, are you hearing about any emerging issues?

A. I am hearing a lot about environmental engineering and its growing importance as it relates to changing regulations and higher standards.

Q. From your vantage point, how does GD&F stack up with other similar firms?

A. In my opinion, we are a pioneering firm in many ways and set the standard for technological innovation. GD&F provides high quality solutions that are innovative and tailored to each client's needs.

Q. What has been the most interesting experience you've had so far?

A. I visited the construction site for the Brookville Wastewater Treatment Plant upgrades with Josh Gunnett. Walking through the entire site and learning about each step of the process really helped me to understand wastewater treatment. I found it to be very interesting.



NEW PROJECTS UNDERWAY

Pennsylvania

Legacy Truck Centers

Site-civil design for 35,000 SF truck dealership/service center in Brookville.

City Of Lock Haven

Upgrades to Warren Ohl Dam and Boyd Keller Dam for compliance with DEP Dam Safety hydraulic standards including supplemental water supply (new well field) Project cost – \$20 million.

Altoona Water Authority

Sanitary and Combined Sewer Rehabilitation Project using spray-on lining (gunite) and cured-in-place pipe (CIPP) methods. Project cost – \$12 million.

PA-American Water Company

Water system improvements including new 0.75 MG storage tank and waterlines (Indiana District), new 0.75 MG elevated spheroid tank and 16-in. main (Washington District) and water booster pumping station and 12-inch main (Punxsutawney District). Project cost – \$7.5 million.

Alexandria Borough Water Authority

Water system improvement project. Project cost – \$10 million.

Cooper Township Supervisors

T-582 bridge replacement project, Clearfield Co.

Elk Township Supervisors

Black Road bridge replacement over tributary to Deer Creek, Clarion Co.

PA Department Of Conservation And Natural Resources

Improvements to Scotts Run Dam and Hopewell Dam at French Creek State Park, Berks Co. Project cost – \$1.2 million.

PA-American Water Co., McMurray Service Territory

Findley Twp. 24-in. water main and booster pump stations, (Allegheny Co.). Project cost – \$5 million.

Lackawanna River Basin Sewer Authority

Consultant to Bassett Engineering for plans of an anaerobic digester membrane cover and gas holder system. Project cost – \$2.2 million

Kunzler & Company., Inc.

Site-civil design for a meat processing plant expansion in Tyrone.

PA-American Water Company, Clarion District

Wastewater system improvements including sludge dewatering and handling system (Clarion Wastewater Treatment Facility), new headworks/cascade aerator (Paint-Elk Wastewater Treatment Facility), sanitary sewer replacements and four wastewater lift stations. Project cost – \$6 million.

Cove Forge Behavioral Health Center

Wastewater treatment plant replacement near Williamsburg.

Walker Township Supervisors

New municipal building and garage for Huntingdon Co. municipality.

City Of Altoona

39th Street-area stormwater management facilities evaluation and sanitary sewer extension design.

West Virginia

Charles Town Utility Board

Consulting Engineer for water and sewer utility in eastern WV.

Northrop Grumman-Alliant Techsystems

Lagoon design for process wastewater from steam plant water treatment system at Rocket Center.

Maryland

City Of Cumberland Treatment Facilities Evaluation

Process treatment system evaluation and condition assessment for Evitts Creek Water Treatment Plant and John DiFonzo Wastewater Treatment Plant.

City Of Cumberland

Lake Gordon Dam new intake screen system, Smouses Mill booster station replacement, Evitts Creek Water Treatment Plant membrane filtration/GAC pilot treatment study, Dry Run Dam breach analysis/emergency action plan and Wastewater Treatment Plant aeration equipment replacement. Project cost – \$1.7 million.

MARK YOUR CALENDARS

- The GD&F annual employee picnic will be held at DelGrosso's Park on **Saturday, August 17**
- The GD&F golf outing is scheduled for **Friday, September 13** at Sinking Valley Country Club

PROJECT BRIEFS



MORGANTOWN UTILITY BOARD

Officials broke ground on a new water supply dam and reservoir. Designed by GD&F, Cobun Creek Dam No. 2 will be a 70-ft. high zoned earth dam that will provide a 400 million gallon supplemental water supply for the Morgantown water system.

The \$47 million project also includes upgrades to Cobun Creek Dam No. 1, a 30" water transmission main and environmental mitigation. GD&F President Mark Glenn noted, "We are proud to be associated with this landmark project and the progressive work of the Morgantown Utility Board" Timothy Ball, P.E., MUB General Manager, said, "The project will be a great asset to protect the water supply of our community."



BEAR VALLEY, FRANKLIN COUNTY JOINT AUTHORITY

Officials held a dedication ceremony to commemorate completion of one of the most technologically advanced water treatment plants in the region. GD&F designed the \$11.5 million project, which includes coagulation, sedimentation and microfiltration processes for the treatment of high turbidity well sources.



PETERSBURG BOROUGH SEWER AUTHORITY

Upgrades to the Petersburg Borough Sewer Authority treatment plant were completed at a cost of \$3.8 million including new fine bubble diffusers, high efficiency aeration blowers, new final clarifiers, ultraviolet disinfection system and new aerobic sludge digester and generator.



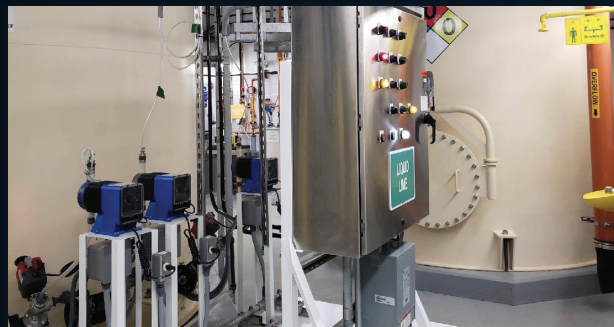
CLEARFIELD MUNICIPAL AUTHORITY

A \$35 million upgrade of the Clearfield Municipal Authority regional wastewater treatment facility was completed. With an average daily flow capacity of 4.5 MGD and peak flow of 25 MGD, the plant has full biological nutrient removal capability using a hybrid Bardenpho Stage 5 Virginia Initiative Plant process. The plant can achieve enhanced nutrient level removal without the need for a supplemental carbon source (methanol) and during high wet weather flow using a unique step-feed process.



BROOKVILLE MUNICIPAL AUTHORITY WASTEWATER TREATMENT PLANT

Upgrades to the Brookville Municipal Authority wastewater treatment plant are scheduled to be completed this summer. The plant will feature full nutrient removal capability up to a hydraulic capacity of 12 MGD. Plant unit operations include new raw sewage pumping station, fine screens, vortex grit separator, nutrient removal technology reactors, final clarifiers, ultraviolet disinfection, aerobic digestors and site improvements. The plant is part of a larger \$20 million project to upgrade the wastewater conveyance and treatment for compliance with DEP sewer overflow mandates.



PA AMERICAN WATER COMPANY, INDIANA DISTRICT

Upgrades to the Two Lick Creek Water Treatment including new chemical feed systems and river intake were completed for the PA American Water Company – Indiana District. The \$3.25 million improvement project included two (2) 4 MGD Johnson half-screens with an airburst system for periodic backflushing of the screens.



JEFFERSON COUNTY

GD&F completed rapid design bridge projects in Jefferson County. Accelerated review of the structural design by PennDOT District 10-0 allowed for expedited project construction. Metal arch culverts were designed for these small drainage basin applications.



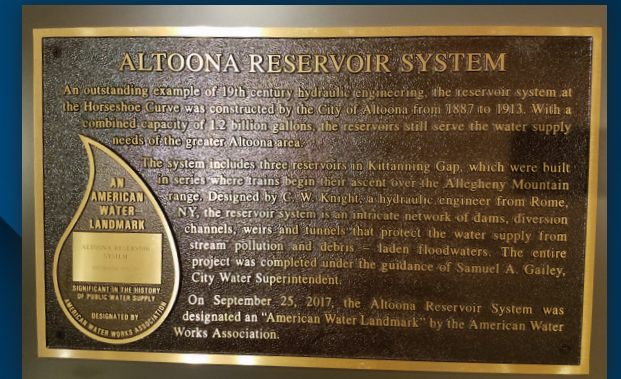
EAST PROVIDENCE TOWNSHIP MUNICIPAL AUTHORITY

The Breezewood (PA) wastewater treatment plant was replaced with an Intermittent Cycle Extended Area System (ICEAS). The process consists of aeration, sedimentation and decant phases. The aeration phase is operated in an oxic/anoxic cycle for nitrification and denitrification. The \$4.2 million project was completed for the East Providence Township Municipal Authority.



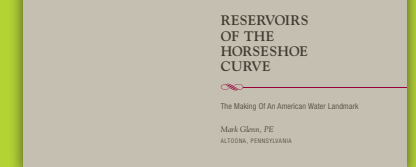
KRANICH'S JEWELERS

GD&F completed the site-civil design for the new commercial development on Plank Road in Altoona, PA. The project included a site layout to minimize traffic impact on the surrounding residential neighborhood while maximizing leasehold space and parking.



ALTOONA RESERVOIR SYSTEM

The American Water Works Association recognized the City of Altoona Reservoir System as an "American Water Landmark". A formal presentation was made to Mayor Matt Pacifico at the Horseshoe Curve's Visitors Center by Douglas Kromandt of AWWA-PA, The plaque, donated by GD&F, includes the inscription, "Altoona Reservoir System - Significant in the History of Public Water Supply."



Mark Glenn wrote a history entitled, "Reservoirs of the Horseshoe Curve – The Making of an American Water Landmark" and GD&F's marketing firm, Suzanne Egan Advertising, produced the publication and companion video (available on YouTube). GD&F donated the video and plaque pedestal which are on permanent display at the Altoona Horseshoe Curve Visitor's Center.

NEW EMPLOYEES

John Berkavich, E.I.T. is a Structural Engineer for the GD&F design team. John earned a BS degree in Civil Engineering Technology from the University of Pittsburgh and passed the Fundamentals of Engineering exam. He is pursuing a MSCE degree (structural emphasis) from Ohio University.

Mickey Carr, P.E. is GD&F's Resident Engineer for the \$28 million Moorefield water project. Mickey is a BSCE graduate of the West Virginia University Institute Of Technology. He is a registered professional engineer and lives in Moorefield with his family.

Bob Chernicky is a Resident Project Representative assigned to various infrastructure construction projects. He earned BS and MS degrees in Business Administration from Clarion University. With over 45 years of experience, Bob has been a construction services manager for Miles Contracting and KC Construction and as a principal at a large coal company (C&K Coal) and energy company consortium.

Tom Fouse is a Senior Resident Project Representative for GD&F, assigned to GD&F utility construction projects. Tom recently retired as the long-time Utility Division Manager with HRI, Inc. Tom is well respected in the industry, with over 40 years of experience in all aspects of infrastructure construction.

Dave Gustkey is GD&F's new construction manager. Dave graduated from Bluefield State College with a BS degree in Civil Engineering Technology and passed the Fundamentals of Engineering exam. He has been a construction manager for Pizzagalli Construction, Danis Environmental Industries and did independent consulting infrastructure design. Dave has guided fishing groups in Ontario, CN.

Horace McAnuff is GD&F's new Surveyor-in-Charge with over 40 years of experience in all aspects of mapping and surveying. Horace is a licensed professional surveyor in Pennsylvania and West Virginia and, since 1993, owner of Geomatics Solutions, LLC, Altoona. Horace is a former soccer official and refereed many high school and college soccer matches.

Emily Nagle is an Environmental Scientist with a BS Environmental Geosciences degree from Slippery Rock University. She previously interned with the Altoona Water Authority. Emily is an accomplished softball player and played in college and for the E1 Professional Softball League.

Dave Pedersen, E.I.T. joined the GD&F team as an Environmental Engineer. Dave earned a BS degree in Environmental Systems Engineering from Penn State and passed the Fundamentals of Engineering exam. He previously worked for Triad Engineering and the BAI Group as an environmental engineer.

David Pike joined the GD&F civil-site group as a Senior Project Manager. Dave has over 30 years of experience in site design for a wide variety of infrastructure systems and residential and commercial developments. With a BS degree in Geography from Indiana University of Pennsylvania, Dave worked for many years in State College as a site designer for Sweetland Engineering and Penn Terra Engineering.

Matt Ritchey, E.I.T. joined GD&F as an Electrical Engineer. He graduated from Penn State University with a BS Electrical Engineering degree and passed the Fundamentals of Engineering exam. Matt previously worked for Bechtel Plant Machinery, Inc. in Monroeville, PA.

Graham Smith, R. Eng. is GD&F's Resident Engineer for the \$40 million Cobun Creek Dam No. 2 project in Morgantown, WV. He earned a Bachelors in Applied Science in Geological Engineering from Queens University, Kingston, Ontario. Graham has designed and constructed geotechnical systems (ground anchors, drilling and grouting, etc.) and dam projects throughout the world.

Jessica Sprouse is GD&F's new Marketing Director responsible for the various aspects of the firm's marketing effort. A graduate of Penn State University with a BS degree in Business Administration, Jessica also earned a MS degree in Health and Human Service Administration from Mt. Aloysius College. Jessica is active in various local committees including the Altoona Sunrise Rotary, PSU- Altoona Alumni Society Board, and United Way.

DID YOU KNOW...

- **Jim Potopa, Andy Arnold** and **Jim Balliet** collected debris along Burgoon Run and Lake Altoona as part of the "Keep Blair Beautiful" cleanup day?
- GD&F was a Guest Artist sponsor for the 90th season of the Altoona Symphony Orchestra?
- GD&F contributed \$16,500 to the St. Francis University Environmental Engineering Department for the purchase of a zeta-potential meter for the study of particle suspension in water?
- **Skyler Eckenrode** and his father, Bill, drive in the Four- Cylinder races at Dog Hollow Speedway?
- Recognizing young professionals in the region, the Pennsylvania Business Central chose **Chris Eckenrode** for their annual "Foremost Under 40" list while **Josh Gunnett** was named to the Altoona Mirror's "20 Under 40"?
- **Andy Johnson** (30 years), **Kevin Smith** (25 years), **Matt Orner** (20 years), **Angie Kordish** (15 years) and **Mike Hammond** (15 years) recently achieved career milestones at GD&F?
- The Bellwood-Antis High School newspaper highlighted former alumnus **Emily Nagle** and her outstanding softball career at Slippery Rock University?
- **Leo Drass** was named in a Blower & Vacuum Best Practices® article on aeration equipment at the Clearfield wastewater treatment plant?
- **Maggie Weitzel** participates in the winter trapping season for muskrat and mink furs near her home in Hopewell?
- **Bob Lechner's** daughter, Sydney, is a setter for the Bellwood-Antis HS girls volleyball team? The 2018 team finished with a 19-5 record.
- Kaylee Smith, daughter of **Kevin Smith**, was a freshman member of the Altoona High School girls basketball team?
- **Steve Gibson** wrote an article on the Clearfield wastewater treatment plant upgrade for the Keystone Tap, a quarterly publication of the Pennsylvania Rural Water Association?
- **Alan Ross** (17 years) and **Thom Miller** (13 years) retired from GD&F as on-site project managers after many years of dedicated professional service to GD&F and Pathline?



- **Jim Potopa's** son Daniel, was a standout football and baseball player for Bishop Guilfoyle High School? He will be attending Lebanon Valley College this fall.
- GDF gave \$1,700 to the American Rescue Workers in Hollidaysburg to the "Engineers Fight To CAN Hunger" drive?
- That this past May, **Jessica Sprouse**, Marketing Director, traveled with other Living Water International volunteers to El Salvador? This was Jessica's second mission trip (her first was in August 2018) to the Central America republic. The volunteer group drills wells so that rural communities can access clean water.

IN REMEMBRANCE

M. Paul Andrews, Controller, 1967-1990
Amos Ferguson, Engineering Technician, 1971-1991
John K. Hite, P.E., Secretary, Board of Directors, 1961-1981
Larry Lingenfelter, Construction Manager, 1990-2016
Art Mason, Construction Inspector, 2006-2014

WELCOME



GWIN
DOBSON &
FOREMAN
ENGINEERS

3121 Fairway Drive
Altoona, PA 16602

INSIDE

New Projects Underway

[PAGE 3](#)

Project Briefs

[PAGE 4](#)

New Employees

[PAGE 6](#)